

System Restore

Overview

System Restore is a component of Windows XP Professional that you can use to restore your computer to a previous state.

Thus, should a problem occur, you are able to return your computer to its 'Pre-Problem' state without losing your personal data files (such as Microsoft Word documents, browsing history, drawings, favorites, or e-mail).

System Restore monitors changes to the system and some application files, and it automatically creates easily identified restore points. These restore points allow you to revert the system to a previous time. They are created daily and at the time of significant system events (such as when an application or driver is installed). You can also create and name your own restore points at any time.

Notes

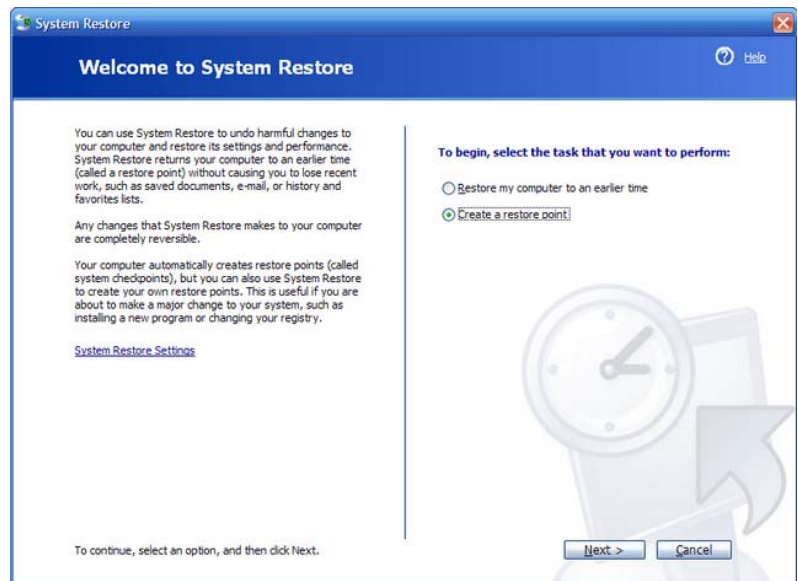
- Creating a restore point can be useful any time you anticipate making changes to your computer that are risky or might make your computer unstable.
- System Restore requires at least 200 MB of available space on the hard disk (or the partition that contains your operating system folder). For best performance and protection, you should allocate more space.
- By default, when the operating system installs System Restore on your computer, it allocates approximately 12 percent of the available disk space to System Restore to archive restore points.
- If you restore to a restore point *before* a program was installed, that program will not work *after* restoration. If you want to use the program again, you must reinstall it.
- System Restore does not replace the process of uninstalling a program. To completely remove the files installed by a program, you must remove the program using Add or Remove Programs in Control Panel or the program's own uninstall program.
- If you have encrypted program files (such as files that have the .exe or .dll file name extensions), you can ensure that they can never be restored to a decrypted state. To do this, turn off System Restore before you encrypt your files or folders, and then turn System Restore on again after the files or folders are encrypted. Or, if you have already encrypted the files or folders, turn System Restore off and on again. When you turn off System Restore, you delete all restore points. The restore points that are created after System Restore is turned on again will not include times when the files were decrypted. Typically, you only encrypt data files, which are not affected by System Restore.
- System Restore will allow you to operate in **Safe Mode**, but only to restore to a previous Restore Point. It will not allow the creation of a new Restore Point

To create a Restore Point

- 1 Access the System Restore Wizard through Help and Support Centre, or by clicking on:

Start, All Programs, Accessories, **System Tools.**

Click **Create a restore point**, and then click **Next.**

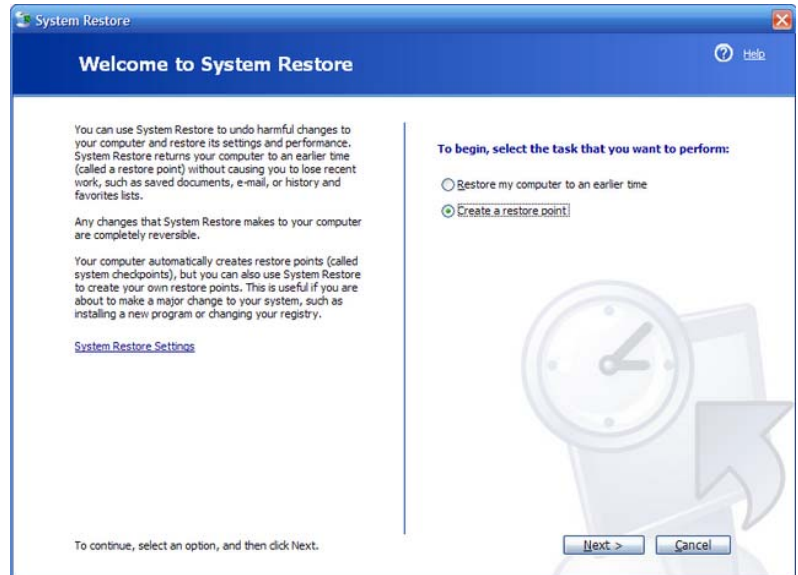


- 2 In the **Restore point description** box, type a name to identify this restore point. System Restore automatically adds to this name the date and time that this Restore Point is created.

To finish creating this restore point, click **Create.**

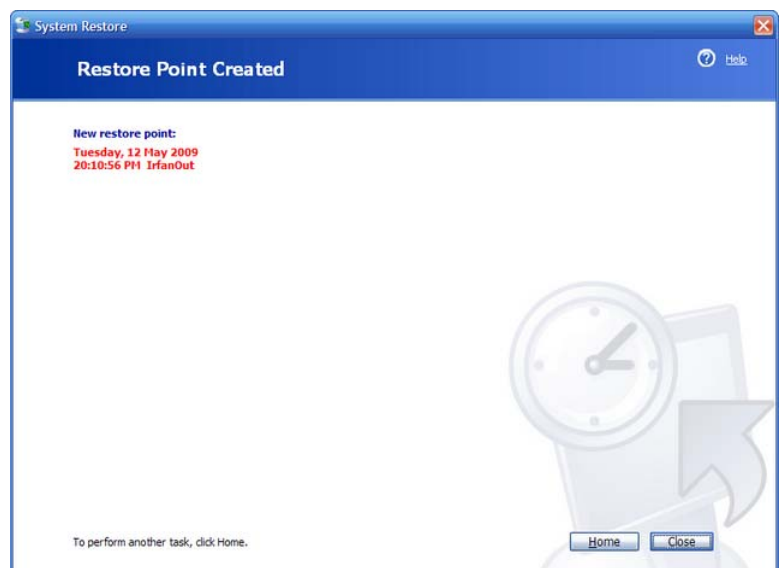
To cancel restore point creation and return to the **Welcome to System Restore** screen, click **Back.**

To cancel restore point creation and exit the System Restore Wizard, click **Cancel.**



- 3 Windows advises that the restore point has been created, and also provides the name of the point and the date and time of its creation.

Click on **close** to leave the Wizard.

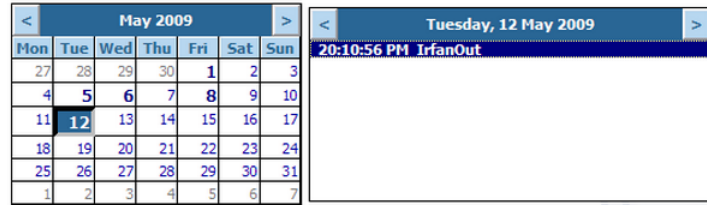


To Restore System to an Earlier Time

- 4** Return to this restore point, from the **Welcome to System Restore** screen of the System Restore Wizard as described in 1 above - select **Restore my computer to an earlier time**. Then select the date when the restore point was created from the calendar in the **Select a Restore Point** screen. All of the restore points that were created on the selected date are listed by name in the list box to the right of the calendar.

Possible types of restore points are: system checkpoints (scheduled restore points created by your computer), manual restore points (restore points created by you), and installation restore points (automatic restore points created when certain programs are installed).

- 1. On this calendar, click a bold date.** **2. On this list, click a restore point.**



< Back Next >

Select the desired Restore Point and click on **Next**

- 6** The wizard advises that to effect the necessary changes it will need to close and restart the system. This is achieved by clicking **Next**.

Selected restore point:

Tuesday, 12 May 2009
20:10 PM IrfanOut

This process does not cause you to lose recent work, such as saved documents or e-mail, and is completely reversible.

During the restoration, System Restore shuts down Windows. After the restoration is complete, Windows restarts using the settings from the date and time listed above.

Important: Before continuing, save your changes and close any open programs.

System Restore may take a moment to collect information about the selected restore point before shutting down your computer.

To restore your computer to this date and time, click Next.

< Back Next >

- 7** As the system closes down a slider shows the progress of the System Restore process.

The system closes and restarts and then displays a window from the Wizard advising that the system has successfully restored itself to the nominated restore point.

You are then given the option to create another restore point, or to click on **OK** and close the Wizard and continue booting up Windows